

REVONIA OPEN

RELAX/FOCUS

PRODUCT SHEET



A DIFFERENT KIND OF HOUSE -
CRAFTED FOR GENERATIONS



www.revonia.co.uk/prefab

Your carefree life starts here

With a different kind of house

This house represents freedom, nature, peace, and healthiness - a sanctuary where simplicity meets the beauty of the natural world.

We've embraced the Japandi philosophy, blending Japanese minimalism with Scandinavian practicality and warmth to craft homes that foster both serenity and well-being.

With organic materials, warm earthy tones, and uncluttered spaces, this home isn't just about aesthetics - it supports a meaningful and balanced lifestyle. It teaches us that happiness lies in simplicity, finding beauty in what truly matters.

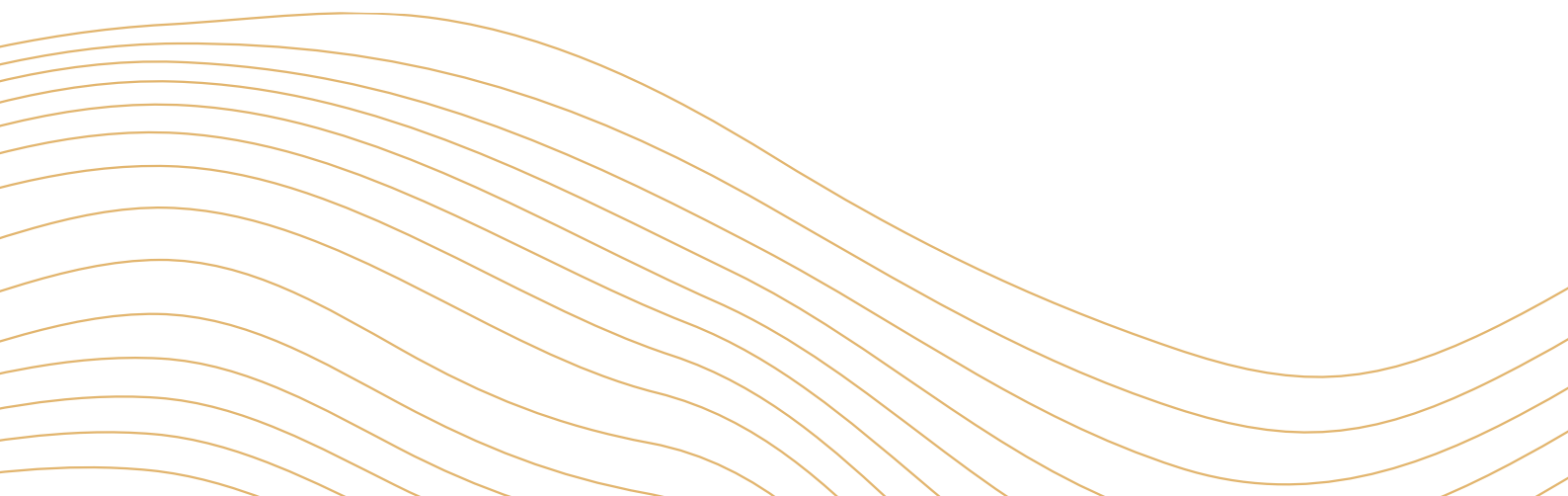
This is also not about taking the time; it's about making the time count. Whether you're relaxing in your cozy living space or getting in the flow under the vaulted ceilings, this home encourages you to focus on life's simple pleasures.

Fully furnished and ready to go, with a plug-and-play installation of just a few hours, it's designed for a long, carefree, sustainable life. Built from strong reinforced concrete and engineered for energy efficiency and longevity, this house is not only a place for today - it's also a greener tomorrow for the generations to come.

Welcome to a space that aligns with your values, your lifestyle, and your desire for peace.

Welcome home.

Rauno Oja
The CEO of Revonia



Exterior options

With biome panels

Choose from our four distinct roof options to match your style and environment. Whether you prefer the sleek, industrial look of Steel, the timeless patina of Copper, the eco-friendly charm of a Green roof, or the natural warmth of a Wooden Roof, each option offers durability and aesthetic appeal.

Customize further with light or dark hexagonal facade panels, blending beauty and functionality to make your house truly unique. These options ensure that your house not only stands out, but also complements its surroundings, creating the perfect balance between nature and design.

Light hex facade

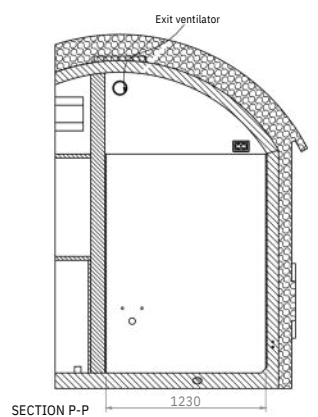
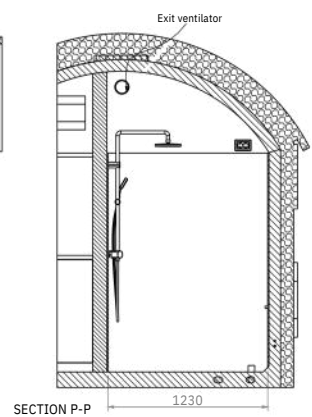
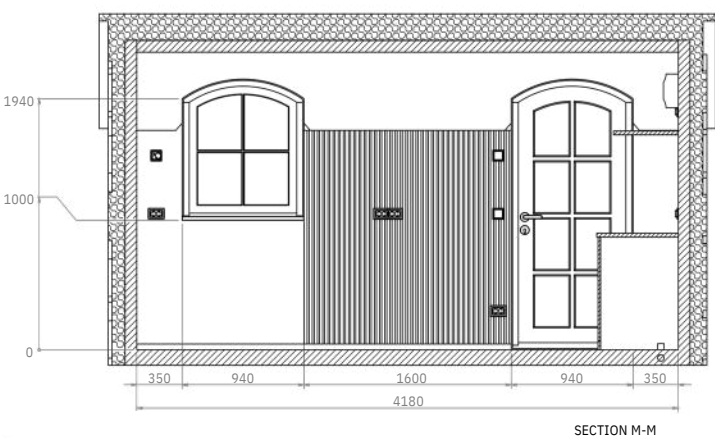
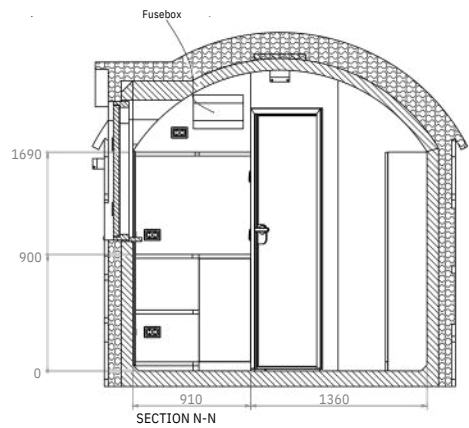
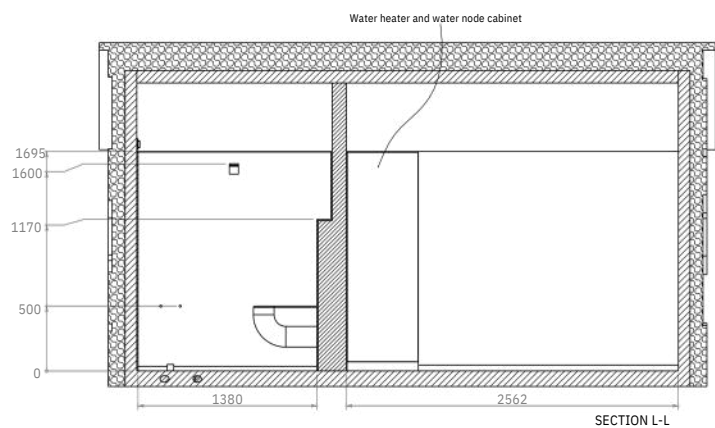
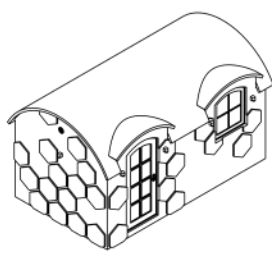
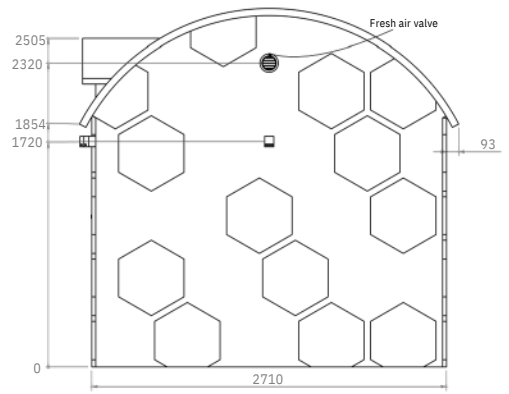
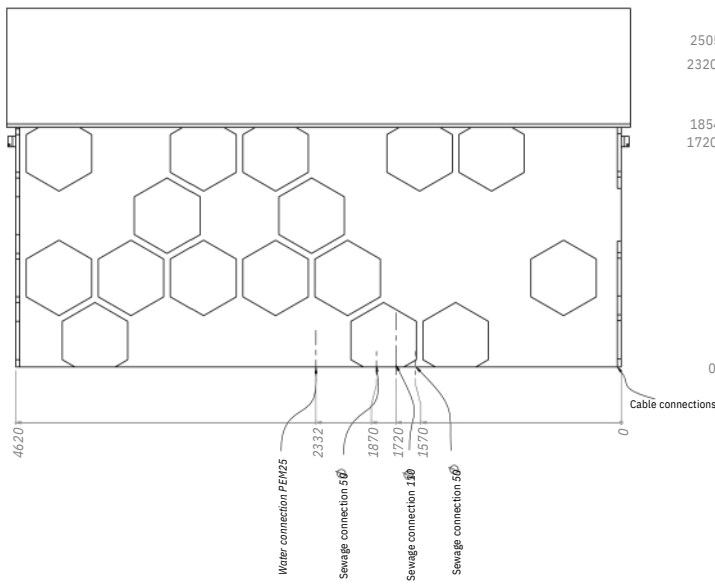
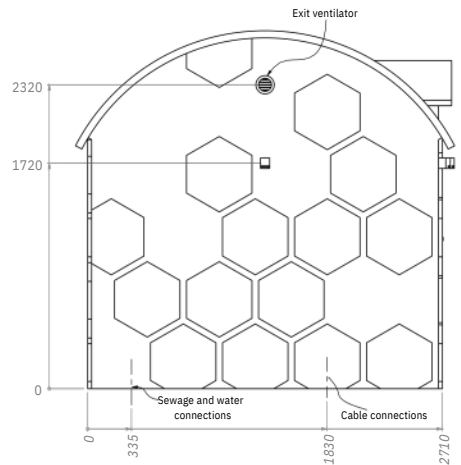
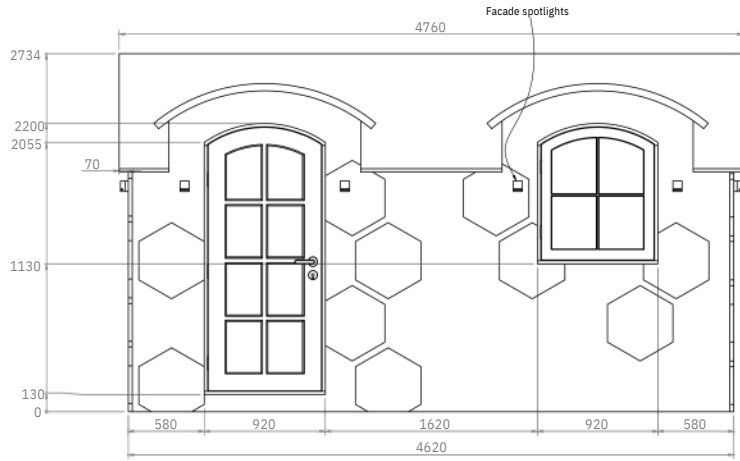
Dark hex facade



All our houses start as non-biome options and the readiness for them can be added later.

Also try out our configurator - www.revonia.co.uk/prefab

Exterior - technical specs

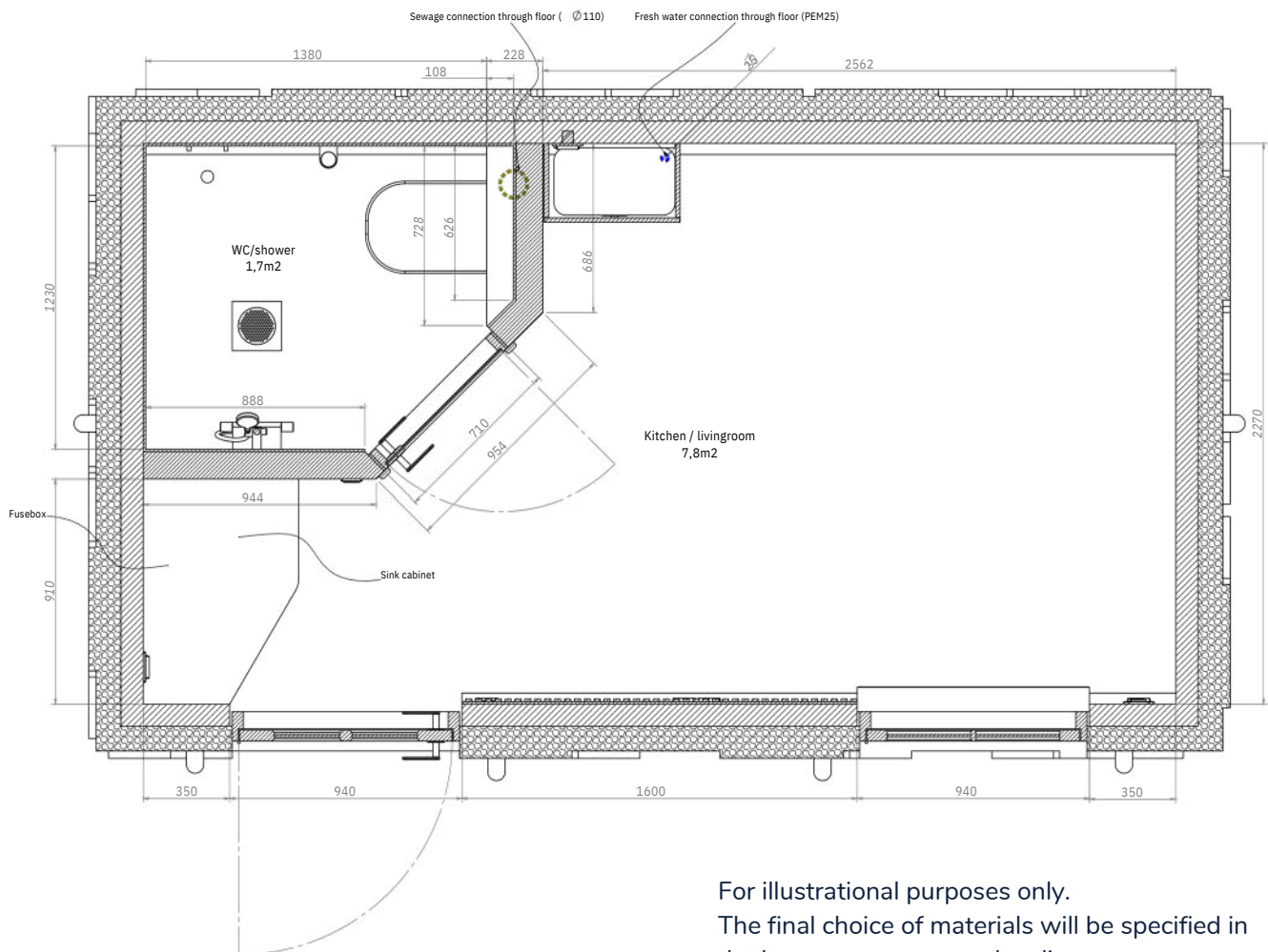


Relax interior

The Relax interior option is designed for ultimate comfort, making it perfect for accommodation. With a cozy bed and all the essentials for everyday living, this space is thoughtfully crafted to create a calm, peaceful environment where you can unwind and recharge. Whether you're using it as a personal retreat or offering it as a rental, the Relax option combines modern convenience with minimalist design, providing everything you need for a stress-free, comfortable stay. Embrace simplicity, comfort, and effortless living in a space that truly feels like home.



Relax interior



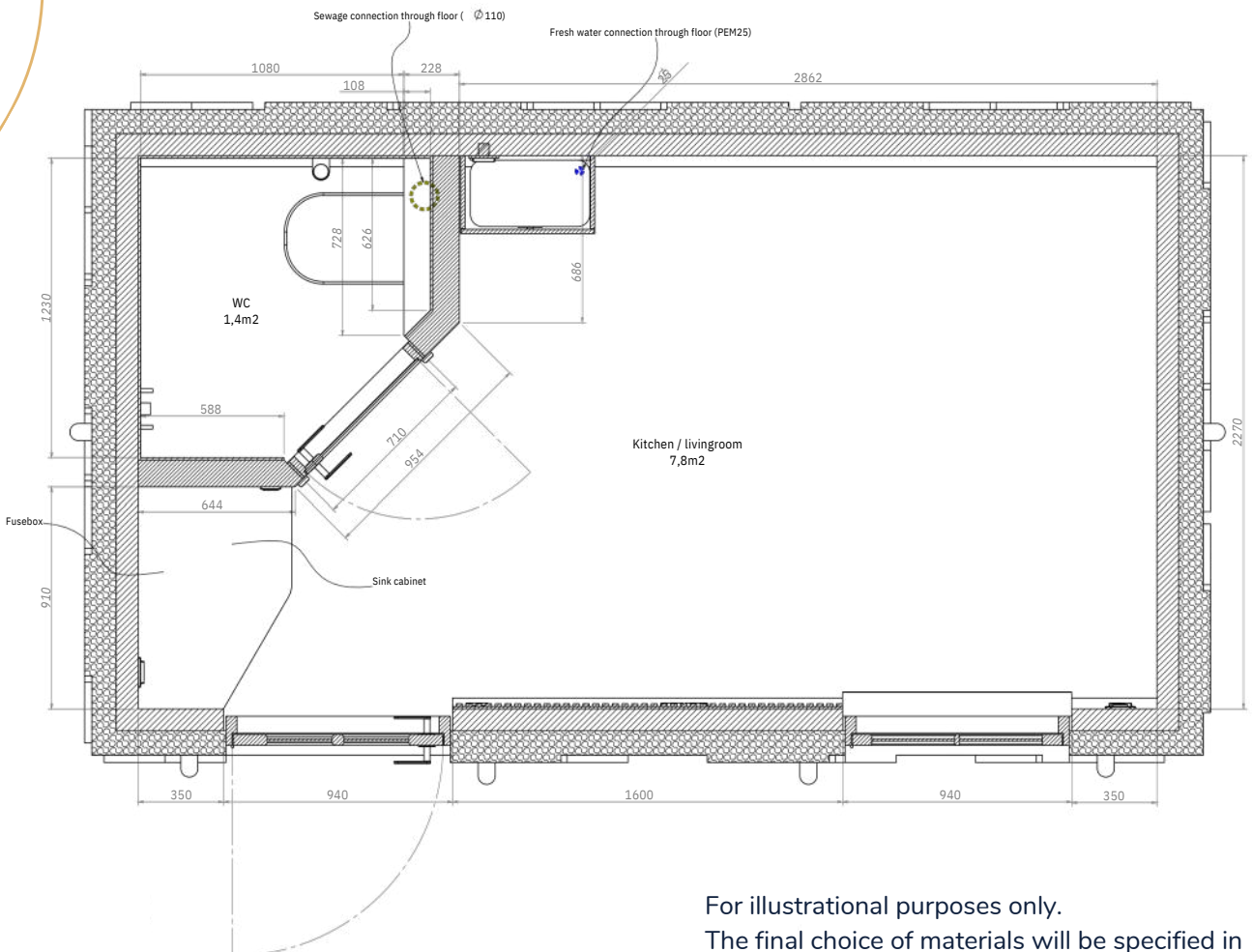
For illustrational purposes only.
The final choice of materials will be specified in
the latest quote sent to the client.

Focus interior

The Focus interior option is built for productivity and creativity. Designed as the ideal home office or creative space, it provides the perfect environment for meetings, brainstorming sessions, and focused work. With a minimalist layout that encourages concentration, this space offers all the essentials you need to stay inspired and efficient. Whether you're hosting clients, developing new ideas, or simply seeking a quiet place to work, the Focus option ensures that you have everything you need to thrive. Create, focus, and succeed in a space tailored for innovation.



Focus interior



For illustrational purposes only.
The final choice of materials will be specified in
the latest quote sent to the client.

Smart interior choices

Living area

Crafted with high-quality, natural materials, the living area offers a mix of warm, organic wood finishes and modern surfaces - providing a blend of comfort and elegance.



Floors



Walls



Cabinets



Wall panels

Bathroom

The bathroom is designed for simplicity and functionality, featuring minimalist fixtures, durable tile finishes, and an uncluttered layout for a spa-like experience.



Matte glass door



Walls 60x60



Floors 10x10



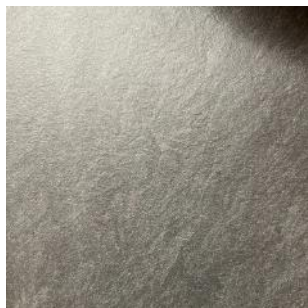
Ventilation

Kitchen

The kitchen includes modern appliances and durable countertops in natural finishes to suit your style and everyday needs. Custom made cabinets with soft-close hinges.



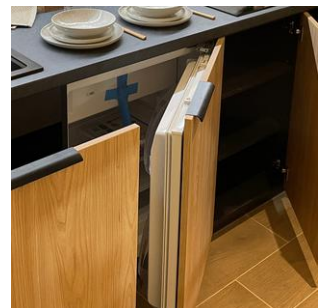
Soft-close hinges



Worktops



Cooking iron



Refrigerator

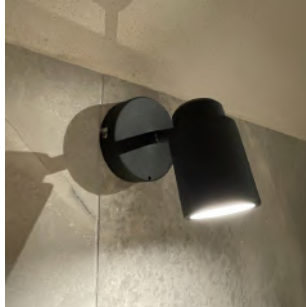
Smart interior choices

Electrical

The house includes all the modern electrical solutions for comfortable, energy-efficient and safe everyday life. The house comes standard with an electrical box, lights and switches.



Living room



Bathroom



Wall outlets



Thermostats

Water

High-quality water elements in the living and bathroom come standard. Just connect the incoming water and outgoing pipes and enjoy the beauty of our well-designed system.



Kitchen



Bathroom



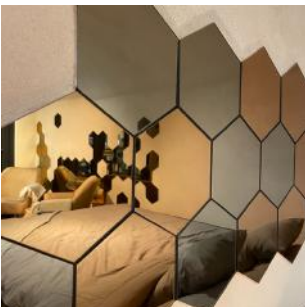
Toilet



Shower faucet

Extras and decorations

Minimalistic interior bits carefully chosen by our interior design team to create a comfy interior and to make your everyday life a bit more creative.



Decorative mirrors



Bathroom mirror

Prices

Price of the house

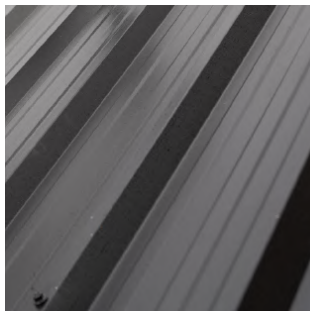
Details on what the base price includes can be found on the next page.



34 950 £

Roofing

The base price includes the metal roofing or the readiness for a green roof.
All other options have a surcharge fee.



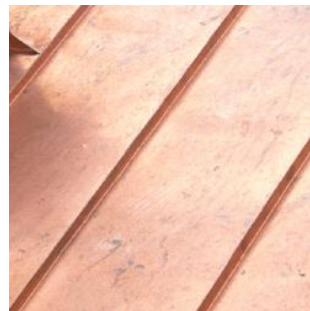
Included in
the price



Included in
the price



+1150 £



+1600 £

Prices do not include VAT

Included in the price

The base price includes the main things you need for your new house. The base price includes:

- ~ Fully finished concrete modules with sealant and fastener systems for connecting them on-site
- ~ External insulation that ranges from 100 mm to 125 mm
- ~ Tripple-glazed doors and windows color-matched with the exterior
- ~ Custom-made roofing of your choice (metal, copper, wood)
- ~ The “green roof” option comes with the readiness for biome installation. Biome itself - not included
- ~ Dark or light-colored facade with hexagonal elements and facade lighting
- ~ Interior walls and ceilings covered with colored textured plaster
- ~ Wood-pattern tiled floors in the living areas
- ~ Dark-colored tiled floors and walls in the bathroom
- ~ Fully finished bathroom with a toilet, shower, faucet and sink, mirror, and a tinted glass door
- ~ Hot water heater (60L)
- ~ Water and sewage piping system connection readiness brought to the outer wall
- ~ Custom-made kitchen with appliances: sink and a faucet, stove, refrigerator, light strip
- ~ Adjustable ventilation system in the living area and a forced ventilation in the bathroom
- ~ Electrical floor heating with touch-sensitive thermostats, 2 areas
- ~ Custom-made wall closet near the entrance
- ~ Natural oak wood panels on the walls (where marked)
- ~ Built-in office table (where marked)
- ~ Full electrical readiness with an electrical board, wiring, switches and lights, 220V
- ~ Basic blueprints, floor plans and documentation

Possible extras

Our solution has a usable lifetime of up to 100 years. This means that every possible extra should be thought out and planned as early as possible due to the nature of later complications.

The possible extras include:

- ~ Custom kitchen and work area changes
- ~ Biome panel readiness on the outer walls
- ~ Custom exterior and interior changes with the changing of blueprints
- ~ Help with applying for permits or choosing an interior design through our cooperation partners

Not included in the base price

Here are some additional things that need your attention on your way to a new house. Not included in the base price:

- ~ Cost of transport or installation of modules on-site. This can be calculated when the exact location is known
- ~ VAT or other taxes
- ~ Loose interior furnishings - chairs, carpets, kitchenware, the TV, nightstand, decorations, etc.
- ~ Costs regarding permits from local councils
- ~ Connection fees for water, sewage, and electricity
- ~ Plot preparation. This varies by ground conditions. Our houses need only a compact gravel base with 100 mm of insulation boards. The most reasonable solution for this is to find a local service provider
- ~ Biome panels. For this, we recommend finding a local service provider
- ~ Terrace or other exterior elements

The simple steps to the keys

The configuration

We have worked hard to figure out the optimal design choices of size, exterior and interior finishes to suit most people. Visit our **configurator** to easily find the best fit for you. After that, contact us for a site visit, consultation or a factory tour to get things moving!



The simple site preparation

You can expect about 8-10 weeks of wait time for us to manufacture the house. Meanwhile, you can apply for permits if necessary, prepare the simple gravel pad for the house and bring the electrical and water connections next to the pad.



All systems clear for go?

When you give us the all-clear from your side then we will load the house onto the truck and start the journey to you.



Only a few hours left

When we reach the site it will take us a total of 5 hours to install the house, finish a few last bits and pieces and make sure everything is in order. After that, we will hand you the keys and you can start using the house right away. Welcome home.



A different kind of house

We will provide you with the necessary documentation, user manuals and a warranty of 25 years for the concrete shell installed according to our instructions with a 2-year warranty for interior and exterior fixtures.



We have won trust both at home and abroad

For more than a decade, we've been dedicated to crafting homes we're proud of. With over 1500 installations under our belt, our reach extends not only across Estonia, but also into the United Kingdom, Finland, Germany, Sweden, Latvia, Lithuania, Norway, Iceland, Austria, and France.

Our experienced, professional, and trustworthy team ensures that every step of the process, from manufacturing to installation, meets the highest standards of quality and reliability.



Our management system has been certified according to ISO 9001:2015



Investing in your future



European Union European Regional Development Fund



ESV-EN 13369:2018
EN 14991:2007
EN 13225:2013
EN 14992:2007 +A1:2012



REPUBLIC OF ESTONIA
MINISTRY OF ECONOMIC AFFAIRS
AND COMMUNICATIONS



Contact us!



Stuart Doust

UKsales@revonia.co.uk

+44 78145 50508

www.revonia.co.uk